



Google SketchUp Pro 7

Do more with your models

Google SketchUp Pro 7 is a suite of powerful features and applications for streamlining your professional 3D workflow.

SketchUp Pro 7: Create, modify and share 3D models

SketchUp Pro includes all the intuitive modeling, visualization and collaboration [features of SketchUp 7](#). Also, generate tabular reports based on the entities in your models.

LayOut 2: Create professional documents and presentations

Produce multi-page presentations, design documents and simple construction drawings. Add dimensions, annotations, text, photos and graphics to create scaled plan, elevation, isometric and perspective views. Share your documents as high-res prints, PDFs and onscreen slide shows.

[Learn more about LayOut 2 »](#)

Importers and Exporters: Exchange model data with CAD and other software tools

With SketchUp Pro 7, you can import and export files in a number of 2D and 3D formats, including DXF, DWG, 3DS, OBJ, XSI, EPS, PDF and more.

Dynamic Components: Make smarter models with custom behaviors and attributes

Add custom attributes that extend your models' usefulness. Build configurable components that are easy for everyone to use.

[Learn more about Dynamic Components »](#)

Style Builder: Create custom, sketchy-edge display Styles for SketchUp

Guarantee that your drawings will look totally unique by creating your own Styles. Base them on strokes you make with pens, pencils, markers or anything else.

[Learn more about Style Builder »](#)

New! [Learn about what's new in SketchUp 7.1 »](#)

Want to see a side-by-side comparison of SketchUp and SketchUp Pro? [Compare](#)

Already made the decision to get Google SketchUp Pro 7? To purchase a new license or upgrade your old one, visit our [online store](#).

[Learn more about corporate purchasing options »](#) (50 seats or more).

From our Customers

Houseal Lavigne - "We often use SketchUp to create a 3D visualization of a development on a vacant site. It helps the community get excited about what type of development might be most suitable for the property based on zoning recommendations, market analysis, and other factors," says Lavigne. "Google SketchUp has become a constant for our firm for 3D modeling and visualization."

DPR - "SketchUp helps take the inefficiencies out of the traditional construction process and really breaks down the walls that used to obstruct communications."

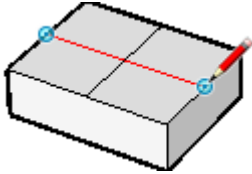


SketchUp 7: More intuitive and more powerful



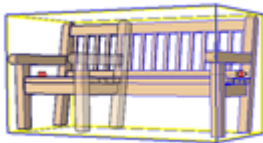
New! In 7.1: Improved support for large models

We overhauled SketchUp's rendering engine to make it easier to work with big models. With the right setup, operations like orbiting, zooming and drawing can be quicker and smoother in 7.1.



Crossing lines break automatically

When you draw a line that crosses another line on the same plane, both lines are split where they meet. Most folks think this is how SketchUp should have worked from the start. Well, now it does. Say goodbye to tracing over edges to make them split.



Scale without stretching

New Dynamic Components are special: they're programmed to know what they are. When you use the Scale tool on a dynamic staircase, it automatically adds or removes steps as you make it bigger or smaller. No more stretching, no more distortion.



Configure objects with Component Options

Some Dynamic Components are hooked up to the new Component Options dialog box. Instead of breaking out the modeling tools to make a change, just choose options and watch the component reconfigure automatically. It's modeling without the mess.



Introducing the Interact tool

Clicking things is fun - especially with the new Interact tool. Some Dynamic Components can perform animations, rotate, move, resize, change color or move to a scene in your model when you click on them with Interact.



New! In 7.1: Photo Textures

Use Google Street View imagery to add real-world photo textures to your geo-located SketchUp models.



New! In 7.1: Nearby models

Use the Component Browser to search the 3D Warehouse for buildings located near the one you're working on, then download the ones you want directly into your model. No more hunting around to find the context you need.



PRO Build components that know what they are

With Google SketchUp Pro 7, you can turn any component into a Dynamic Component. Endowing your models with behaviors like animation and smart scaling makes them easier for you and everyone else to use. If you can use a spreadsheet, you can build Dynamic Components.



PRO Custom attributes

Need to keep track of metadata like Part Number, Weight or Cost in your models? With SketchUp Pro 7, you can tag your models with luscious meaning and information to make them more useful and easier to carry forward in your workflow.

SketchUp 7: Sharing and Collaboration

3DWH



Search the 3D Warehouse

We've added Google 3D Warehouse Search to the Component Browser, which gives you access to jillions of models (give or take a zillion) right inside SketchUp. You can also save particular searches as Favorites, making it easier to find stuff quickly later on.



Download models locally

You can save anything you find on the 3D Warehouse to your local drive, making it easy to work even if you happen to be offline. Better yet, you can download models to local collections up to a dozen at a time.



New! In 7.1: Direct Component upload

Upload individual components to the 3D Warehouse without first having to save them out to separate files. Split up large city models into buildings, preserve Dynamic Component functionality and more.



Take (and give) credit

Tag your models with your nickname so that people will know who built them no matter where they end up. And since Credits automatically keeps track of the stuff you use to build your own models, it's easier than ever to give credit to your collaborators.

Save As...

Save A Copy As...

Save As Template...

Revert

Send to Layout

Custom Templates

You can include all of your organization's proprietary Styles, Watermarks and components in a custom Template so that every member of your team has everything they need, right from the start. In SketchUp 7, saving custom templates is a breeze.

.dae

New! In 7.1: Import and Export COLLADA files

COLLADA is a 3D file format based on open standards. The data you create is yours; it shouldn't be locked inside a proprietary file type. COLLADA makes it easier to move your models between different pieces of software.



New! In 7.1: Import and Export KMZ files

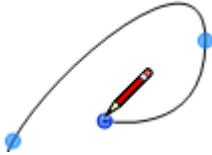
Google Earth KMZ is the standard file format for packaging 3D models together with information about their geographic locations. The newest version of SketchUp gives you access to a world of geo-located 3D models.



Dimensions $2\ 19/32''$, 17.

Long live Measurements

You know the little text box in the lower-right corner of the SketchUp modeling window? The one you use to enter dimensions, angles and other stuff? Now you can key in numbers in LayOut just like you do in SketchUp. Be accurate to your heart's content.



Curves are fun again

Its boring name notwithstanding, LayOut 2's new-and-improved Line tool has superpowers. It's simple and intuitive, and it incorporates everything you already love about SketchUp's inference system. Try it and you'll see -- it's like taking off your mittens to tie your shoes.



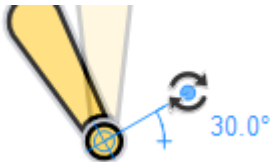
New! In 7.1: Improved Freehand tool

Draw curves with LayOut 2's Freehand tool and watch them turn into smooth, perfect vector lines that you can edit. It's a more natural way to draw.



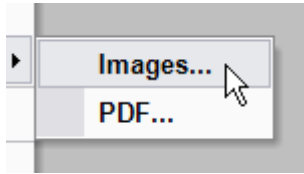
Editable paths

Double click any shape in LayOut 2 to edit its control points. Drag any point onto an adjacent one to make the first one disappear. Hold down Ctrl (Option on a Mac) to add a point or make a smooth curve pointy. Reshape any curve fluidly by dragging its handles.



Move, rotate and scale

We've completely redesigned LayOut's geometric manipulators to be easier to use and to stay out of your way. You can move, scale and rotate anything on your page without changing tools, and the new "heads-up" display helps with accuracy as you work.



Export to images

Need JPEGs or PNGs of your pages? LayOut 2 includes direct export to these formats, which saves you from having to use another tool to rasterize your PDFs. We suggest using your extra time to do something for yourself. Maybe buy a hammock.



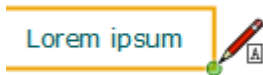
In-place Group edit

Use the Select tool to double click a group to edit its contents. You can move, scale, rotate and copy/paste inside the group, then click outside to go back to the rest of your file. No more ungrouping and regrouping just to make a change.

- bulleted
- lists
- are
- pretty
- cool
- 1. numbered
- 2. lists
- 3. are
- 4. even
- 5. cooler

New! In 7.1: Lists

LayOut 2 makes it easy to include lists – bulleted or numbered – in your text.



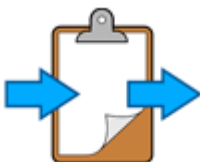
Improved Text

For LayOut 2, we've fixed problems and added some new functionality for text. You can now create both bounded (confined to a box) and unbounded text, depending on your need. Text can be aligned to top, bottom, left, right or center within its bounding box, both vertically and horizontally.



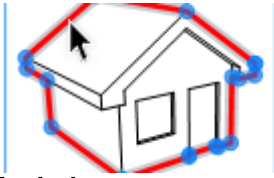
New! In 7.1: Improved Grids

Being able to see your grid as dots instead of lines, behind or in front of your drawing, makes it easier to see what you're doing. Hooray for clarity!



New! In 7.1: Improved Copy/Paste

We've made it easier to move elements like graphics and text between LayOut 2 and the other programs in your design toolbox.



Explode

Right-click on any placed SketchUp model and choose Explode. Depending on how it was rendered, you'll get vector lines, raster images, or a combination of both. It's the easiest way to get vector geometry to edit directly, hands-down.



And that's not all!

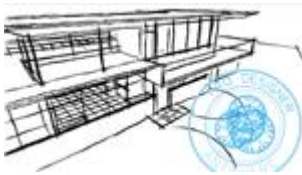
We made improvements to almost every corner of LayOut in its first non-Beta release: rectangle pick targets, styles handling, text editing, layer visibility, toolbars, presentation mode, overall stability, view performance, memory management -- you name it, we made it better.

PRO Style Builder: Make your own sketchy-edge Styles for SketchUp



Turn models into sketches

Showing a hand-drawn sketch does two things: It abstracts detail so you and your client can talk about what's important, and it communicates that your concept is open for discussion. With Style Builder, you can create personalized sketchy Styles that tell the story of your design.



Brand your models

The Styles you create with Style Builder are completely unique. When you apply them to your models, you'll have computer models that look like you made them. After thirty years of CAD, isn't it about time everybody's drawings stopped looking the same?



Use any medium at all

Your Styles can be based on any mark you make, in any medium. Marker, pencil, crayon, burnt stick, technical pen, ballpoint, gouache, smudgy finger, pen and ink, highlighter... You get the picture - anything.